

FED. DIST. NO.	STATE	U.S. RYE PROJ. NO.	FISCAL YEAR	SHEET NO.	TOTAL SHEETS
6	ARK.	NRM269 E	1934	1	7

STATE JOB 5132

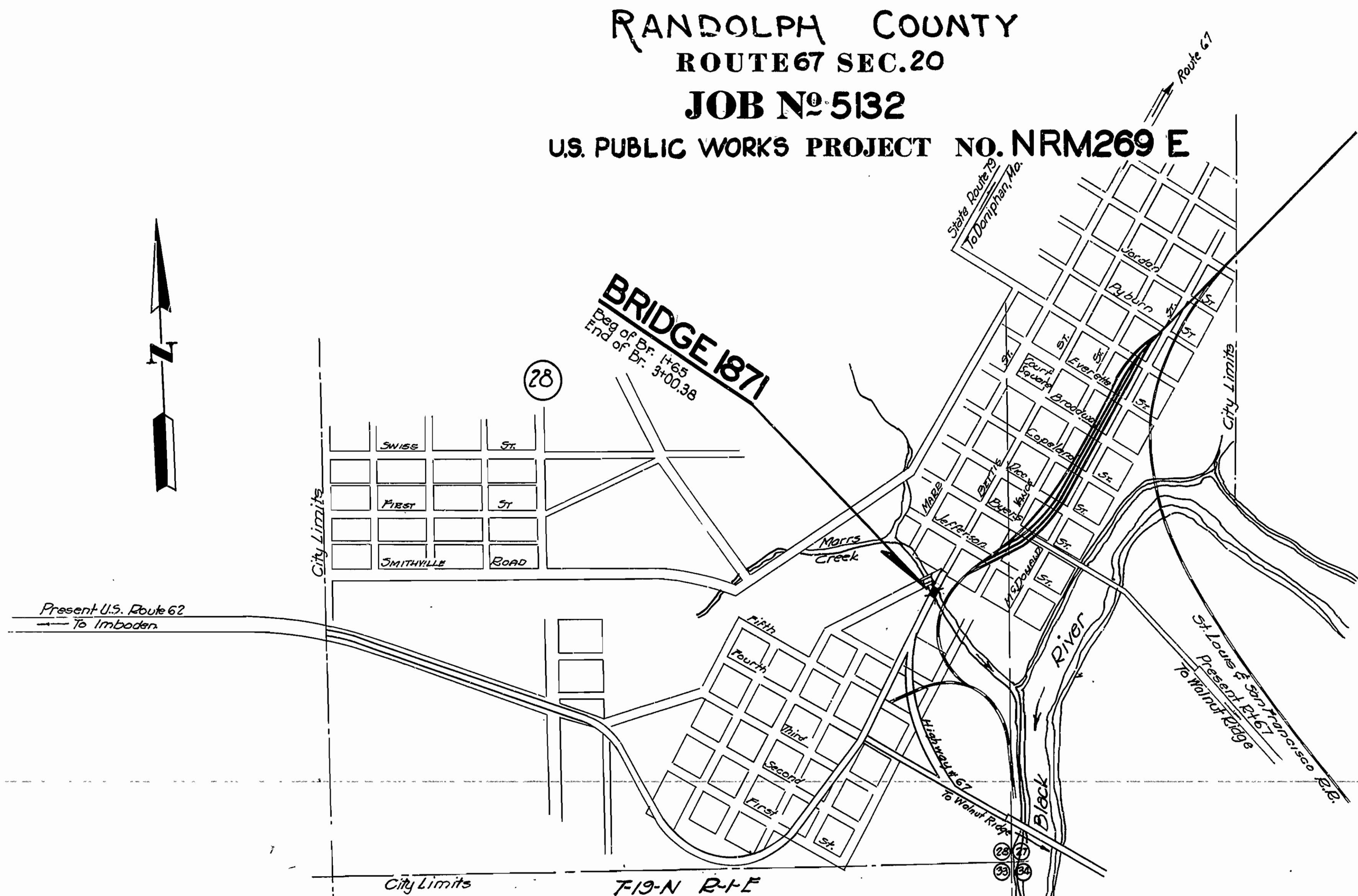
STATE OF ARKANSAS
STATE HIGHWAY COMMISSION

PLAN OF PROPOSED BRIDGE
OVER MARR'S CREEK AT POCAHONTAS

RANDOLPH COUNTY
ROUTE 67 SEC. 20
JOB NO. 5132
U.S. PUBLIC WORKS PROJECT NO. NRM269 E

INDEX OF SHEETS

Sheet No.	Drawing No.	Title Sheet
1	3816	General Layout Sheet Bridge No. 1871.
2	3817	Details of Abutment No. 1.
3	3818	Details of Approach Spans, Bent, and Handrails.
4	3819	Details of Arch Span.
5	3820	Details of Abutment No. 2.
6	3821	Bronze Project Marker Plates and Bronze State Bridge Name Plates.
7	2386	



QUANTITIES

13	Dry excavation for Structures	313	Cu. Yds.
13	Wet excavation for Structures	40	Cu. Yds.
13	Solid Rock excavation for Structures	9.0	Cu. Yds.
91	Class 'A' concrete for Bridges	237.1	Cu. Yds.
91	Class 'S' concrete for Bridges	225.7	Cu. Yds.
92	Reinforcing steel for Bridges	69076	Lbs.
94	Concrete railing for Bridges	322	Lin. Ft.
Sp.	Bronze State Bridge Name Plates	2	Each.

Specifications approved by Chief, Bureau of Public Roads, September 28, 1925, and adopted by State Highway Commission May 30, 1925 with revisions and Special Provisions as follows:

REVISIONS

Item	Date	Approved
Pamphlet A Revised	MAR. 1st, 1931	Approved June 18, 1931
" L Revised	FEB. 10th 1933	" " "
" M "	MAR. 1st, 1931	" " "
" N Revised	OCT. 1st, 1933	" " "

SPECIAL PROVISIONS

Item	No. of Sheets	Date
Subletting, Labor & NRA Code Compliance	18	9-26-33
Beginning and Prosecution of Work	1	8-10-33
Bronze Proj. Marker Plates and Bronze State Br. Name Plates.	1	

LAYOUT
Scale: 1"=400'

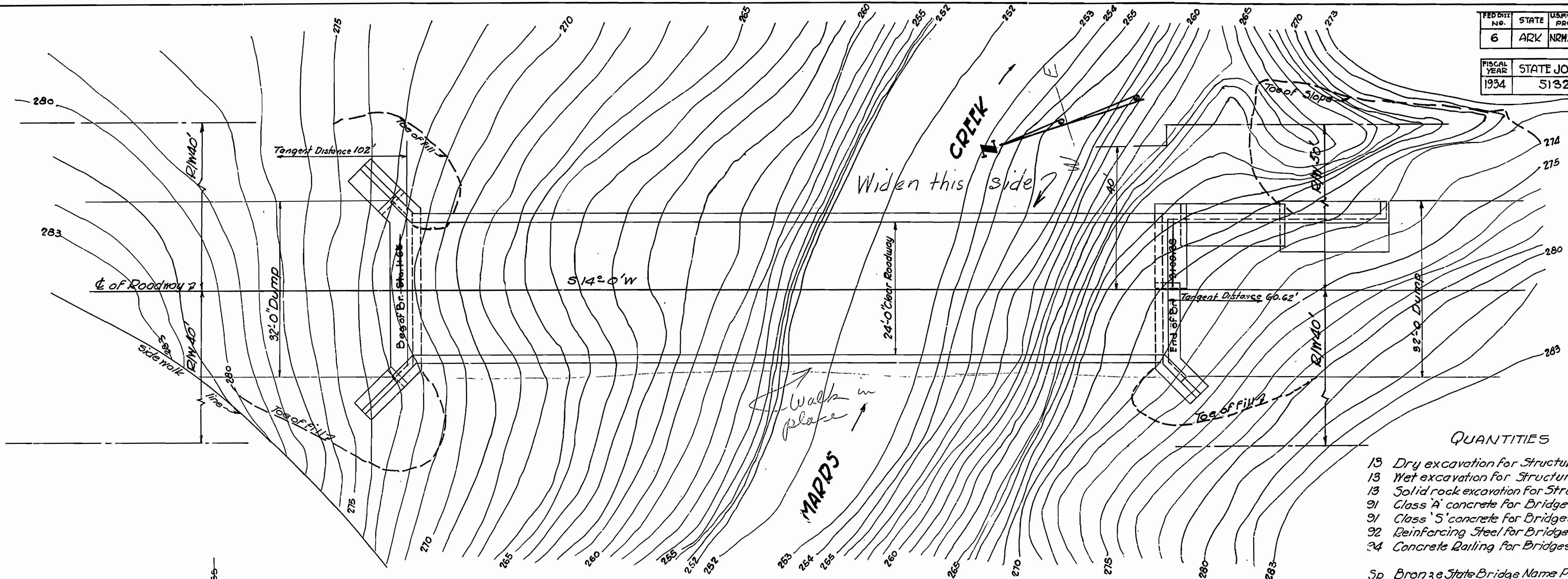
LENGTH OF PROJECT = 135.38 ft. or .025 mi.
LENGTH OF BRIDGES = 135.38 ft. or .025 mi.
LENGTH OF EMBANKMENT =
LENGTH OF JOB = 135.38 ft. or .025 mi.

Quantities 6/19/34 L.R.C.

APPROVED
CHIEF ENGINEER - U. S. BUREAU OF PUBLIC ROADS
APPROVED
DISTRICT ENGINEER - U. S. BUREAU OF PUBLIC ROADS
APPROVED
CHIEF - U. S. BUREAU OF PUBLIC ROADS
APPROVED
CHAIRMAN - STATE HIGHWAY COMMISSION

M.B. Lewis
BRIDGE ENGINEER
BRIDGE NO. 1871
DRAWING NO. 3816

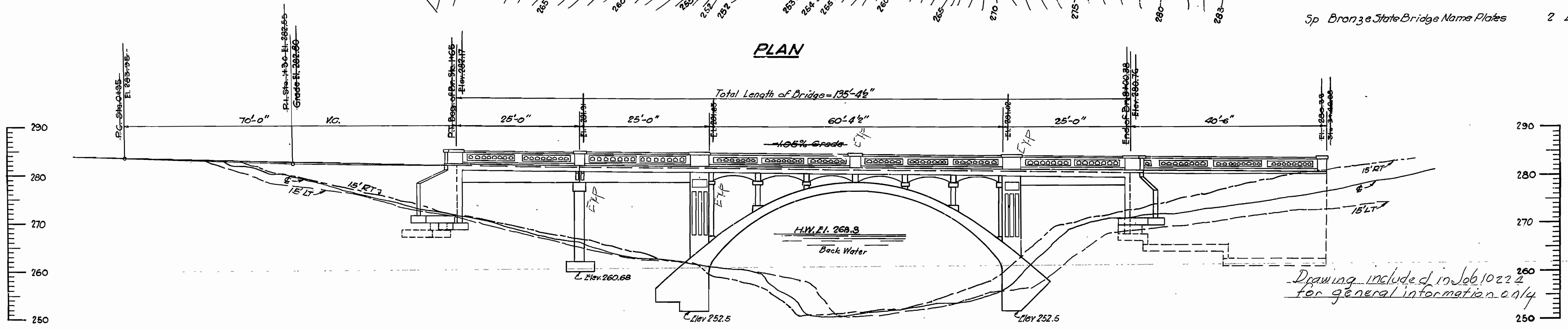
FED. DIST. NO.	STATE	U.S. HWY. PROJ.	FISCAL YEAR	SHEET NO.	TOTAL SHEETS
6	ARK	NRM 2024	1934	27	32
FISCAL YEAR	STATE JOB NO.	SHEET NO.	TOTAL SHEETS		
1934	5132	2	7		



QUANTITIES

13	Dry excavation for Structures	313 Cu.Yds
13	Wet excavation for Structures	40 Cu.Yds
13	Solid rock excavation for Structures	90 Cu.Yds
91	Class 'A' concrete for Bridges	237.1 Cu.Yds
91	Class 'S' concrete for Bridges	225.7 Cu.Yds
92	Reinforcing Steel for Bridges	69,076 Lbs.
24	Concrete Railing for Bridges	322 Lin.Ft.
Sp Bronze State Bridge Name Plates		2 Each

PLAN



ELEVATION

Drawing included in Job 10224 for general information only

B.M.
S.P. Cor. concrete Porch
40' RT. Sta 0+25 El. 290.65

General Notes:

All concrete in Arch abutments, approach bent and bent footings, and retaining walls, and footings to be class 'A' concrete.
 All other concrete to be class 'S', including handrail
 Reinforcing steel to be deformed bars of structural intermediate grade. Bars shall be 40 diam. except as shown.
 Roadway drains, expansion devices, including mesh, joint material, to be paid for as reinforcing steel.
 Shop lists and bending diagrams of reinforcing steel shall be submitted and approved before fabrication is begun.
 Arch ribs to have 2" chamfer on edges. Other exposed edges to have 3/4" chamfer unless otherwise noted.
 Plans showing falsework for the arch and the proposed order of concreting shall be submitted and approved before construction is begun.
 All reinforcing steel in handrail to be included in price of rail. Handrail to be paid for on linear foot basis.
 Specifications: Ark. Standard Road Bridge Specifications adopted May 30, 1925 and revised.

Approved *N.B. Lawrence*
BRIDGE ENGINEER

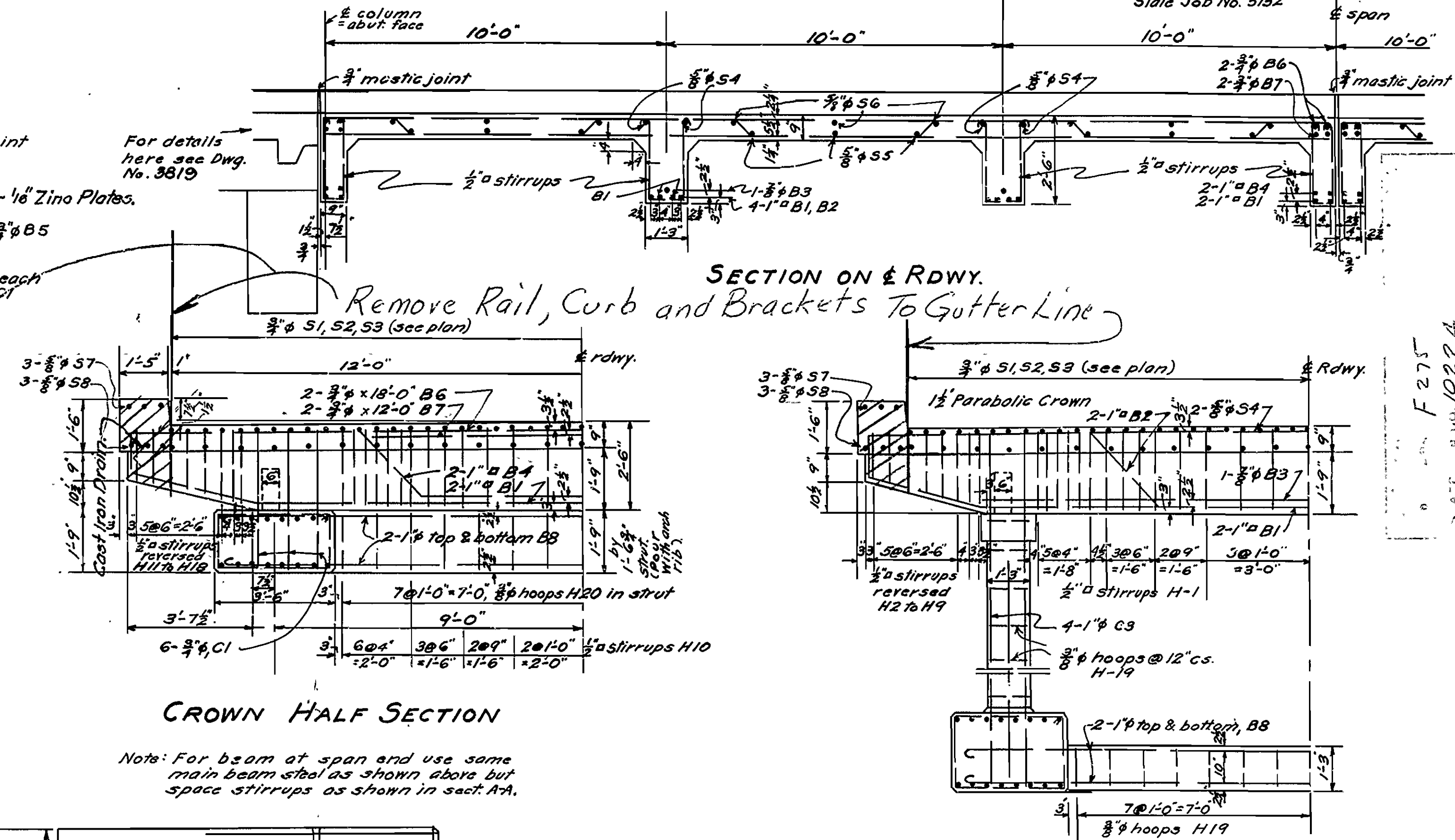
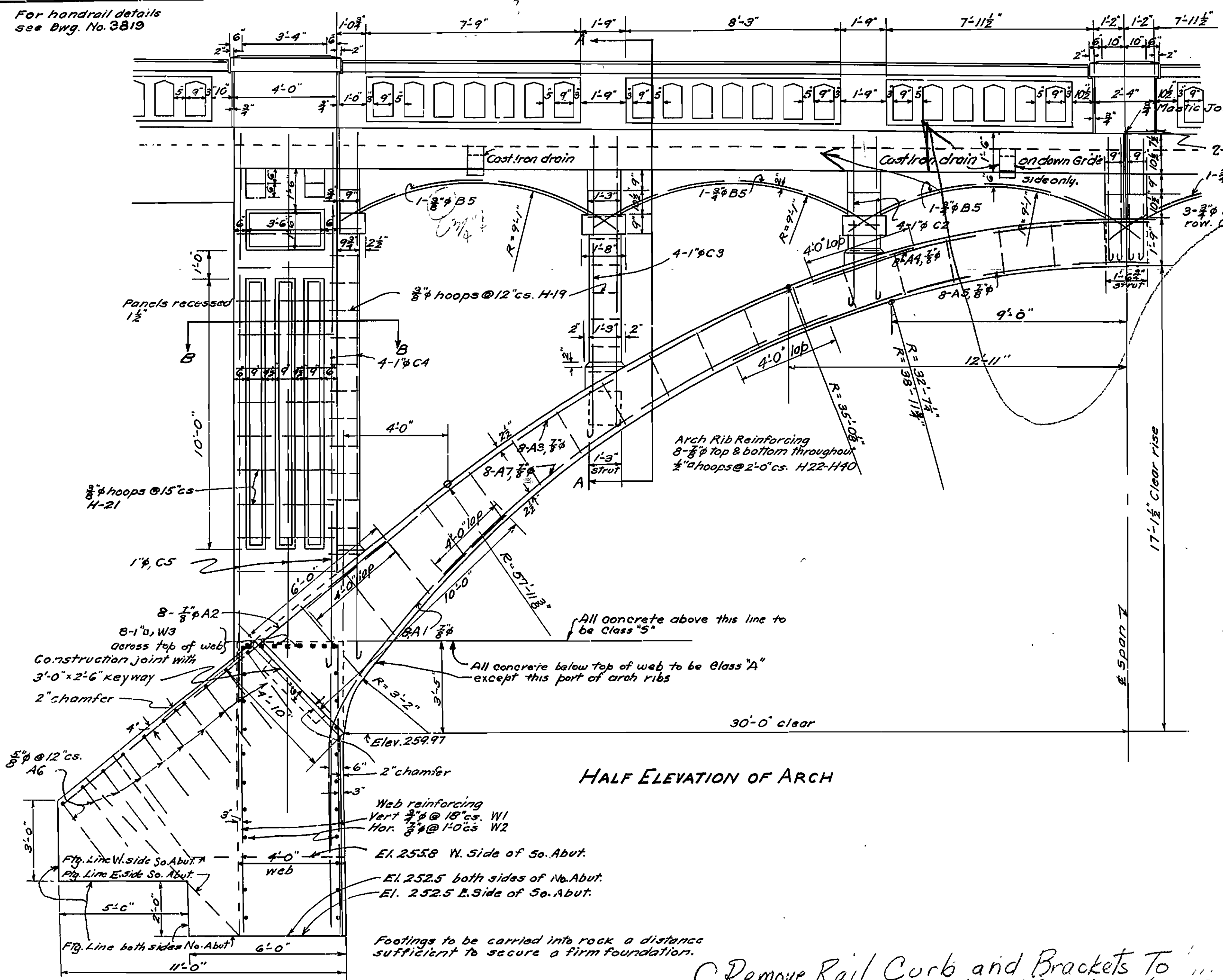
LAYOUT OF BRIDGE
OVER MARDS CREEK
AT POCAHONTAS RANDOLPH CO.
ROUTE 67 SEC. 20

ARKANSAS STATE HIGHWAY COMMISSION
LITTLE ROCK, ARK.

Drawn By B.V. Date 6-4-34
Traced By R.G.B. Date 6-6-34
Checked By Date
Scale: 1" = 10'-0" Vert.
1" = 10'-0" Horiz.

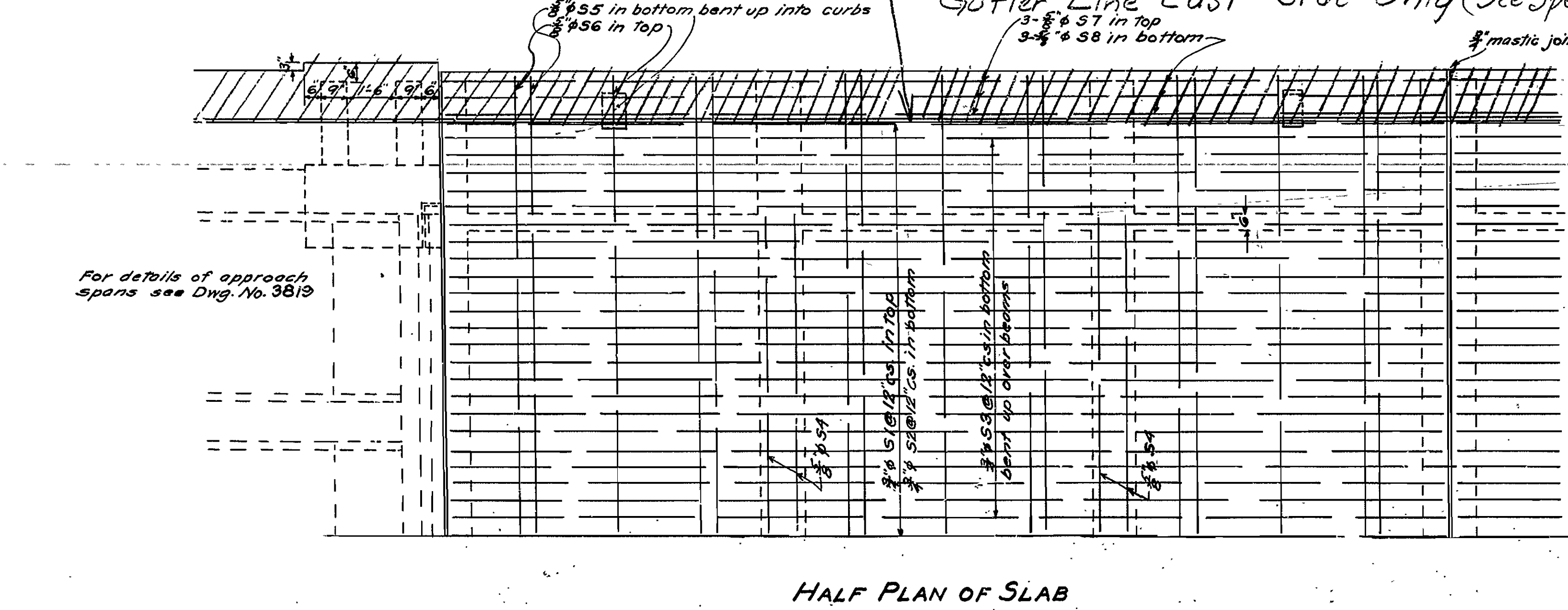
BRIDGE No. 1871 DRAWING No. 3817

State Job No. 5132



BENT BAR LIST FOR ARCH SPAN

Mark	Size	Length	A	B	C	Bend
S1	3/4"	30'-8"	5'-2"	29'-9"		
S7	5/8"	31'-9"	1'-0"	29'-9"		
A6	5/8"	13'-0"	8'-0"	7'-0"		
S3	3/4"	32'-3"				
S5	5/8"	28'-10"				
B2	1"	29'-8"	1'-11 1/2"	2'-9"	6'-7"	
B4	1"	29'-6"	1'-9"	2'-6"	6'-9"	
B3	5/8"	20'-10"	19'-0"			
B8	1"	23'-10"	21'-0"			
W2	3/4"	26'-10"	25'-0"			
W3	1"	27'-0"	25'-0"			
B1	1"	26'-2"				
H1	3/4"	6'-0"	2'-1"	11"	3"	
H2-H9	3/4"	4'-0"	3'-0"	11"	3"	
H10	3/4"	5'-6"	2'-1"	5 1/2"	3"	
H11-H18	3/4"	4'-6"	1'-7 1/2"	5 1/2"	3"	
H19	3/4"	4'-7"	11 1/2"	4"		
H20	3/4"	6'-3"	1'-5 1/2"	1-3/4"	4"	
H21	3/4"	12'-5"				
H22-H40	3/4"	12'-9"	3'-2 1/2"	1'-3/4"	4"	
C1	3/4"	6'-6"	4'-6"			
C2,3,4	1"	Various				



Note: Bar dimensions given c-to-c.
Drawing included in Job 10224 for general information only.

DETAILS OF ARCH SPAN.
BRIDGE OVER MARR'S CREEK
AT POCOHONTAS, ARK.
 ROUTE 67 SEC. 20
 ARKANSAS STATE HIGHWAY COMMISSION
 LITTLE ROCK, ARK.
 Drawn By: B.V. Date: 6-4-34
 Traced By: B.V. Date: 6-5-34
 Checked By: Date:
 BRIDGE NO. 1871 DRAWING NO. 9820

FED. ROAD DIST. NO.	STATE	PROJECT NO.	FISCAL YEAR	SHEET NO.	TOTAL SHEETS
	ARK.	F275 (1)			
STATE JOB NO. 10224				19	61

SUMMARY OF BRIDGE QUANTITIES (CODE NO. X024)

ITEM No.	ITEM	UNIT	BENT 1	BENT 2	BENT 3	BENT 4	BENT 5	BENT 6	ABUTMENT	SPAN 1	SPAN 2	SPAN 3	SPAN 4	SPAN 5	SPAN 6	TOTALS
103	Dry Excavation For Structures	Cu. Yd.	19	8	9		33	28	97							194
103	Wet Excavation For Structures	Cu. Yd.				9										9
103	Solid Rock Excavation For Structures	Cu. Yd.	2	2	2	5	7	6	22							46
SP& 802	Class "A" Concrete For Bridges	Cu. Yd.	6.82	6.70	7.97	22.30 22.09	29.91	21.54	53.54							148.78 148.57
SP& 802	Class "S" Concrete For Bridges	Cu. Yd.								10.17	10.65	19.94	73.23	38.98 37.86	47.37	200.32 199.22
SP& 803	Reinforcing Steel	Lb.	820	930	1141	2933	4081	3681	5234	1700	1845	3180	19346	5559	6850	57500 57300
805	Concrete Railing	Lin. Ft.								19.6	20.0	24.3	56.1	22.2	21.8	164
807	Metal Bearing And Roadway Expansion Devices	Lb.											1160 760			1160 760
919	Manholes	Each														2
922	12" Sanitary Sewers	Lin. Ft.														40
929	Bridge Name Plates (Type "A")	Each								1					1	2
SP1061-3	Moving Pipe Lines	Lin. Ft.														200
SP	Remodeling Existing Bridge	Complete Item														100%

SUMMARY OF BRIDGE QUANTITIES
 WIDENING MARR'S CREEK BRIDGE
 POCAHONTAS, ARKANSAS
 RANDOLPH, COUNTY

ROUTE 67 SEC. 20

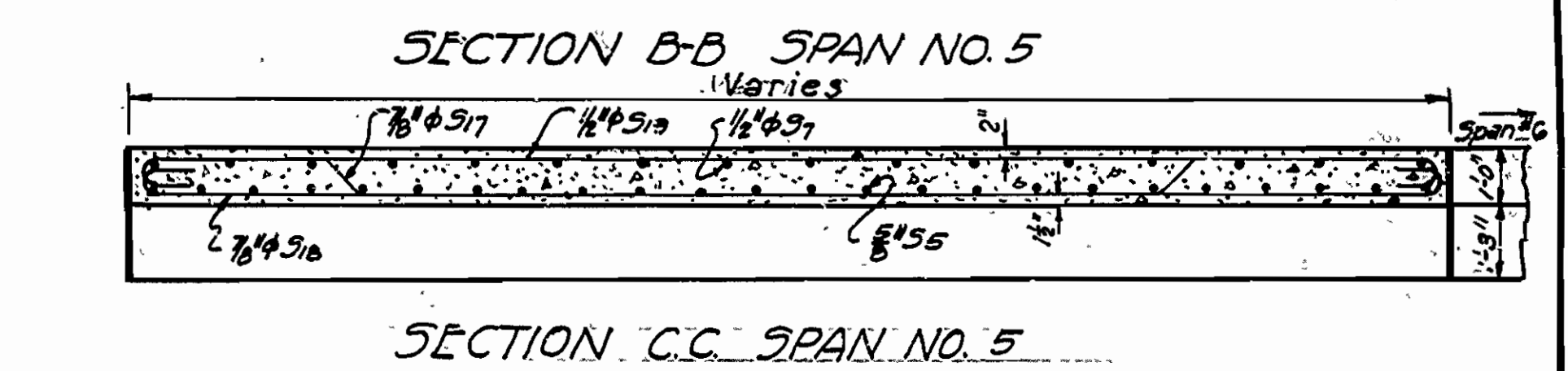
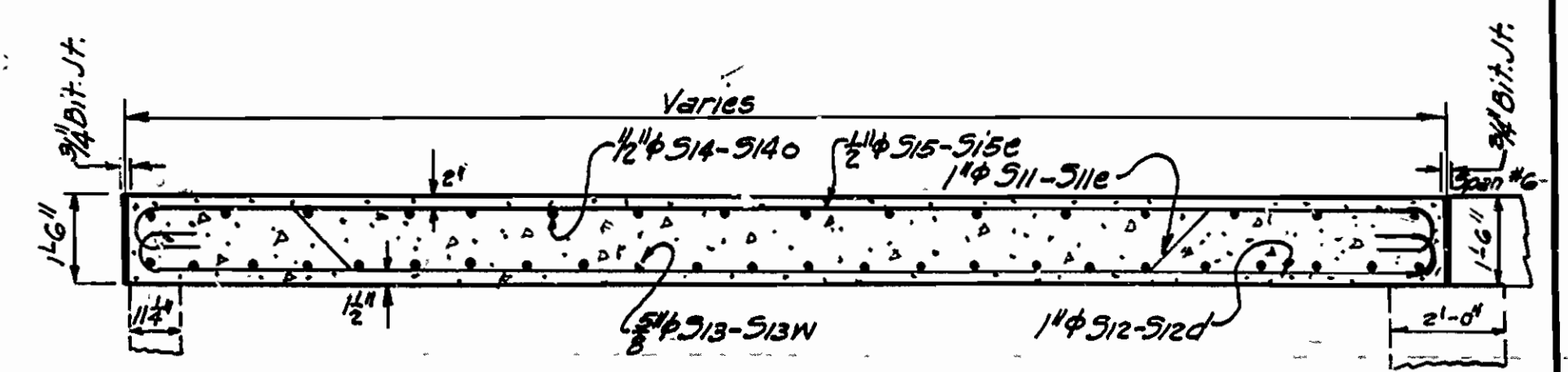
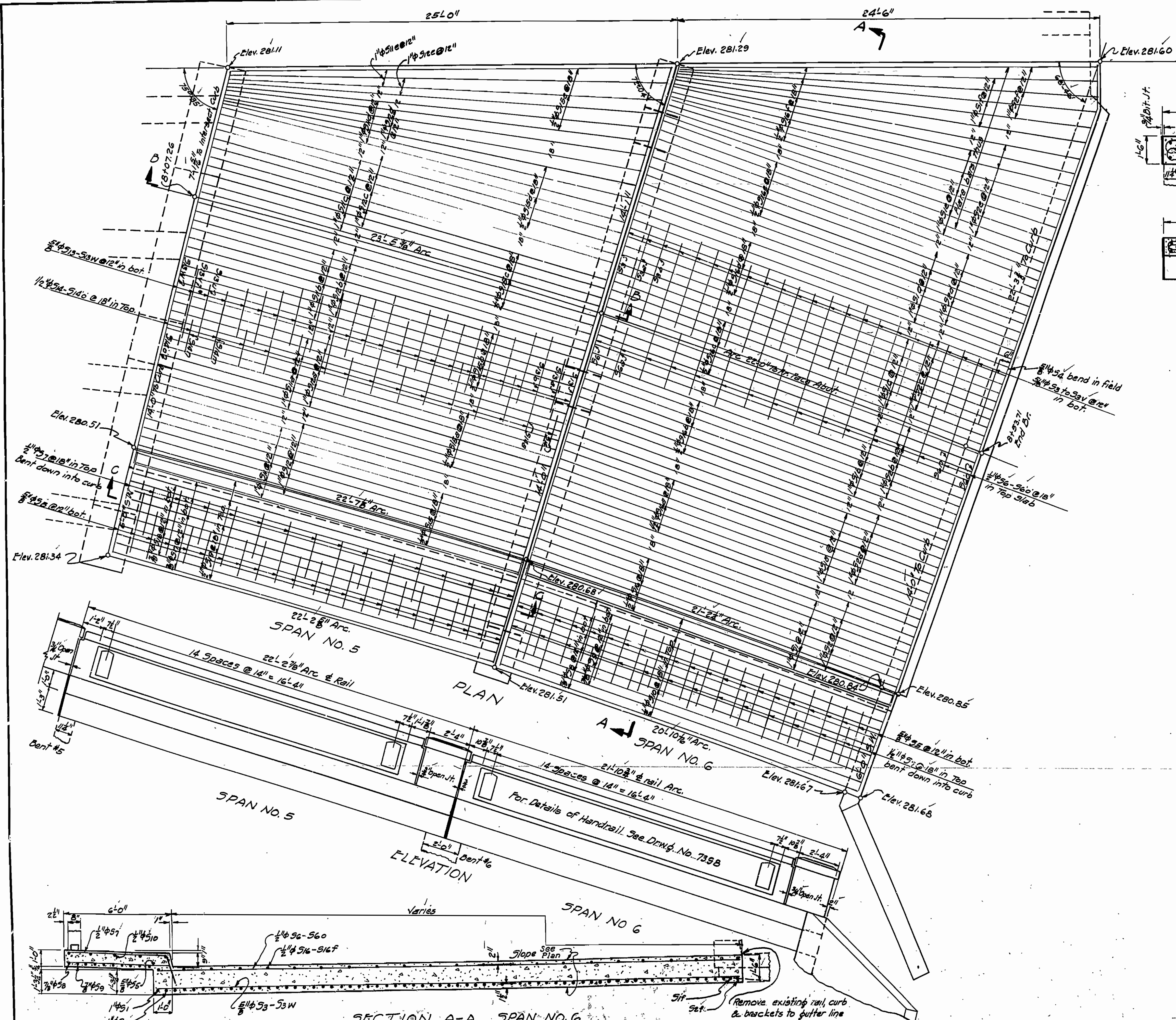
ARKANSAS STATE HIGHWAY COMMISSION
 LITTLE ROCK, ARK.

Drawn By: L.P.C. Date: 9-21-49
 Traced By: L.P.C. Date: 9-27-49
 Checked By: _____ Date: _____

H. O. Shaver
 BRIDGE ENGINEER

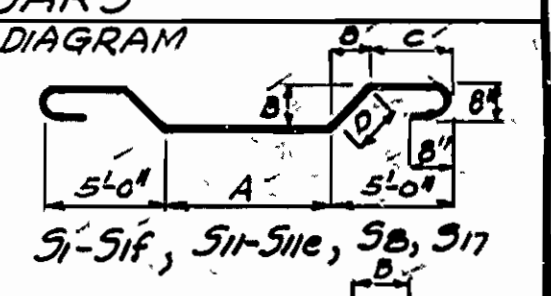
BRIDGE NO. 1871 DRAWING NO. 7391

FED. ROAD DIST. NO.	STATE	PROJECT NO.	FISCAL YEAR	SHEET NO.	TOTAL SHEETS
6	ARK.	F 275 (1)			
STATE JOB NO. 10224					



LIST OF BENT BARS

MARK	SIZE	LENGTH	A	B	C	D	DIAGRAM
5i	1/2"	24'-11"	11'-11"				5i-5if, 5ii-5iie, 5ib, 5ii
5ia	1/2"	25'-2 1/2"	12'-2 1/2"				
5ib	1/2"	25'-6"	12'-0"				
5ic	1/2"	25'-9 1/2"	12'-3 1/2"				
5id	1/2"	26'-1 1/2"	13'-1 1/2"				
5ie	1/2"	26'-4 1/2"	13'-4 1/2"				
5if	1/2"	27'-0"	14'-0"				
5ii	1/2"	25'-3 1/2"	12'-3 1/2"				
5iia	1/2"	25'-6 1/2"	12'-6 1/2"				
5iib	1/2"	25'-10"	12'-10"				
5iic	1/2"	26'-1 1/2"	13'-1 1/2"				
5iid	1/2"	26'-5 1/2"	13'-5 1/2"				
5iie	1/2"	27'-1 1/2"	14'-1 1/2"				
52	1/2"	23'-11"	21'-11"	8"			
52a	1/2"	24'-2 1/2"	22'-2 1/2"	8"			
52b	1/2"	24'-6"	22'-6"	8"			
52c	1/2"	24'-9 1/2"	22'-9 1/2"	8"			
52d	1/2"	25'-1 1/2"	23'-1 1/2"	8"			
52e	1/2"	25'-4 1/2"	23'-4 1/2"	8"			
52f	1/2"	26'-0"	24'-0"	8"			
512	1/2"	24'-3 1/2"	22'-3 1/2"				
512a	1/2"	24'-6 1/2"	22'-6 1/2"				
512b	1/2"	24'-10"	22'-10"				
512c	1/2"	25'-1 1/2"	23'-1 1/2"				
512d	1/2"	25'-6"	23'-6"				
512e	1/2"	26'-0"	24'-0"				
518	7/8"	23'-1 1/2"	21'-1 1/2"	8"			
59	1/2"	23'-7 1/2"	21'-7 1/2"	8"			
5a	1/2"	24'-2 1/2"	11'-7 1/2"	8 1/2"	4'-3 1/2"	1'-0"	
517	7/8"	24'-6"	11'-1 1/2"	8 1/2"	4'-3 1/2"	1'-0"	
57	1/2"	7'-0"					



For General Notes See Drawg. No. 739B
 All 3/4" Dia. Joint material to be included in price bid for Class 5 Conc.

REVISED 9-30-49 Corrections
 DETAILS OF SPANS 5&6
 WIDENING MARR'S CREEK BRIDGE
 POCAHONTAS, ARKANSAS
 RANDOLPH, COUNTY
 ROUTE 67 SEC. 20

ARKANSAS STATE HIGHWAY COMMISSION
 LITTLE ROCK, ARK.
 Drawn By: L.A.M. Date: 2-21-49
 Traced By: L.A.M. Date: 2-22-49
 Checked By: _____ Date: _____
 BRIDGE NO. 1871 DRAWING NO. 7399

M.B. Bowers
 BRIDGE ENGINEER